

L.L.Bean SUMMER IN THE PARK 2011



July 2 - September 3, 2011
L.L.Bean Discovery Park, Freeport, Maine

L.L.Bean SUMMER IN THE PARK 2011



Freeport Farmer's Market

Every Friday through September 3, 2-5:30 p.m.

Shop from a great mix of local vegetables, baked goods, handmade items, and more, every Friday afternoon throughout the summer. [more>>](#)



Fourth of July Celebration

July 2 - 4

Experience a host of outdoor activities, live entertainment, and fireworks. Compete in a 10k race, watch a parade march down Main Street, and listen to concerts in Discovery Park. [more>>](#)



Concert - Ryan Shaw

Saturday, July 2, 7:30 p.m.

Critics say Shaw possesses a voice and style that belong to another era, when R&B was about real singers, real instruments and real songs. [more>>](#)



Concert - Red Horse

Monday, July 4, 7:30 p.m.

Folk's newest supergroup features Eliza Gilkyson, John Gorka and Lucy Kaplansky. [more>>](#)



Food Festival

July 9

Get a little taste of Freeport at this fun event. Sample delicious food, learn tips about cooking your own delicacies, and watch competitions among local chefs. [more>>](#)



Concert - Court Yard Hounds

Saturday, July 16, 7:30 p.m.

Join Martie Maguire and Emily Robison, Grammy-winning duo from the Dixie Chicks, as they show off their Texan roots with tender ballads and good-time anthems. [more>>](#)

July 2 - September 3, 2011
L.L.Bean Discovery Park, Freeport, Maine

L.L.Bean SUMMER IN THE PARK 2011



KidsFest

July 23

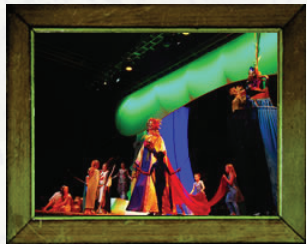
Kids of all ages will enjoy this great day full of games and fun activities, including craft making, live entertainment, meeting live animals and much more. [more>>](#)



Concert - Amos Lee

Saturday, July 30, 7:30 p.m.

With his laid-back vocal delivery and acoustic songwriting, Amos Lee draws inspiration from soul music, contemporary jazz, and '70s folk artists like James Taylor. [more>>](#)



Shakespeare In The Park

August 2 - 12

Freeport Shakespeare Festival brings together the finest professional actors, designers and stage technicians to present a memorable production of the festive and fun comedy Twelfth Night. [more>>](#)



Concert - Rickie Lee Jones

Saturday, August 13, 7:30 p.m.

Join Grammy award-winning artist Rickie Lee Jones as she pushes the boundaries of rock, blues, jazz and pure vocals with songs from her vast collection of popular hits. [more>>](#)



Dog Days of August

August 20

Bring your best friend to this mid-summer celebration of our canine companions. Presentations by expert dog handlers, a fun dog walk, special activities and contests. [more>>](#)



Concert - America

Saturday, September 3, 7:30 p.m.

Our final concert of the summer season will feature the classic-rock favorite America, now celebrating their 40th anniversary of music. [more>>](#)

July 2 - September 3, 2011
L.L.Bean Discovery Park, Freeport, Maine

L.L.Bean SUMMER IN THE PARK 2011



L.L.Bean Campus
95 Main Street
Freeport, Maine

Schedule is subject to change.
For details and updates, visit
llbean.com/events or call 877-755-2326

PLEASE NOTE NEW POLICY:
*Chairs and other unattended items will
be permitted in the park only on the
day of a performance.*



L.L.Bean Outdoor Discovery Schools make trying a
new outdoor sport easy!

For just \$20, you can try a new outdoor adventure like kayaking, archery, clay shooting, or fly casting. Just walk into the L.L.Bean Flagship Store in Freeport, sign up at the Outdoor Discovery Schools Kiosk, and you're on your way to enjoying a new sport!

No pre-registration is necessary and all equipment is provided. For a full schedule of L.L.Bean Outdoor Discovery Schools' offerings, visit llbean.com/ods or call 1-877-755-2326.

For more information about Summer in the Park 2011 contact
Kathy Whitney, L.L.Bean Public Relations at 207-552-6046 or
kwhitney@llbean.com

July 2 - September 3, 2011
L.L.Bean Discovery Park, Freeport, Maine